

Whipple Cheat Sheet

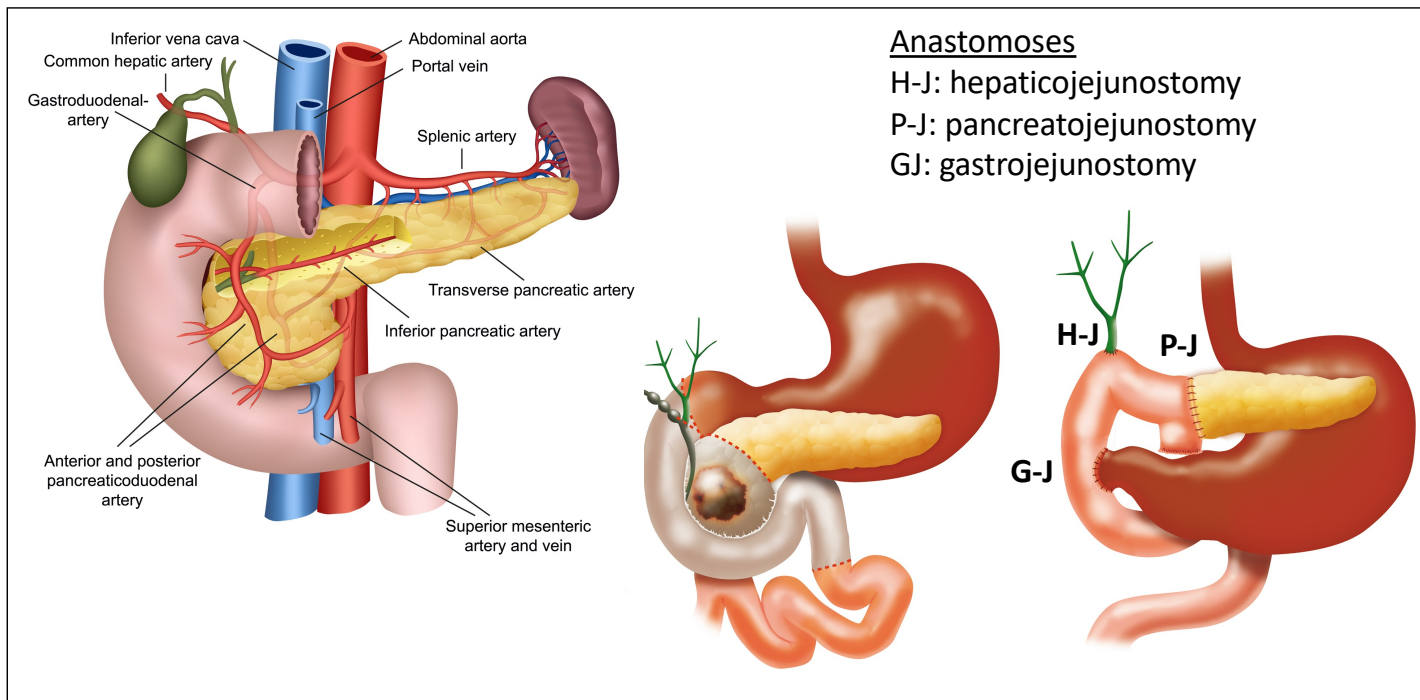
Setup Checklist

- 2nd IV setup
- Carrier fluid
- Phenylephrine gtt
- Art-line setup
- NG tube
- Epidural bolus meds (as applicable)
- Multi-modal analgesia meds (as applicable)

Case Progression

Preop	<input type="checkbox"/> Type and screen +/- crossmatch +/- thoracic epidural (<i>anticipated major arterial reconstruction requiring heparin gtt may preclude epidural</i>)
Access	PIV x2 Arterial line +/- CVC (for cardiac morbidity or poor peripheral vasculature) NG tube
Induction	<i>Consider RSI for tumor obstructing bowel</i>
Analgesia	Thoracic epidural or Multi-modal analgesia: lidocaine gtt, ketamine gtt, precedex gtt
Intraoperative Considerations	<ul style="list-style-type: none"> • Judicious fluid administration using goal directed fluid therapy • Total pancreatectomy patients become insulin dependent

Whipple Anatomy



Goal Directed Fluid Therapy

Target euvolemia by administering small IVF boluses for pulse pressure variation > 12%.

$PPV = \text{ventilator-cardiac interaction accentuated by hypovolemia.}$

Restrictive Fluid Status	Organ Perfusion
<i>Less bowel edema at anastomoses</i>	<i>Dependent on preload</i>